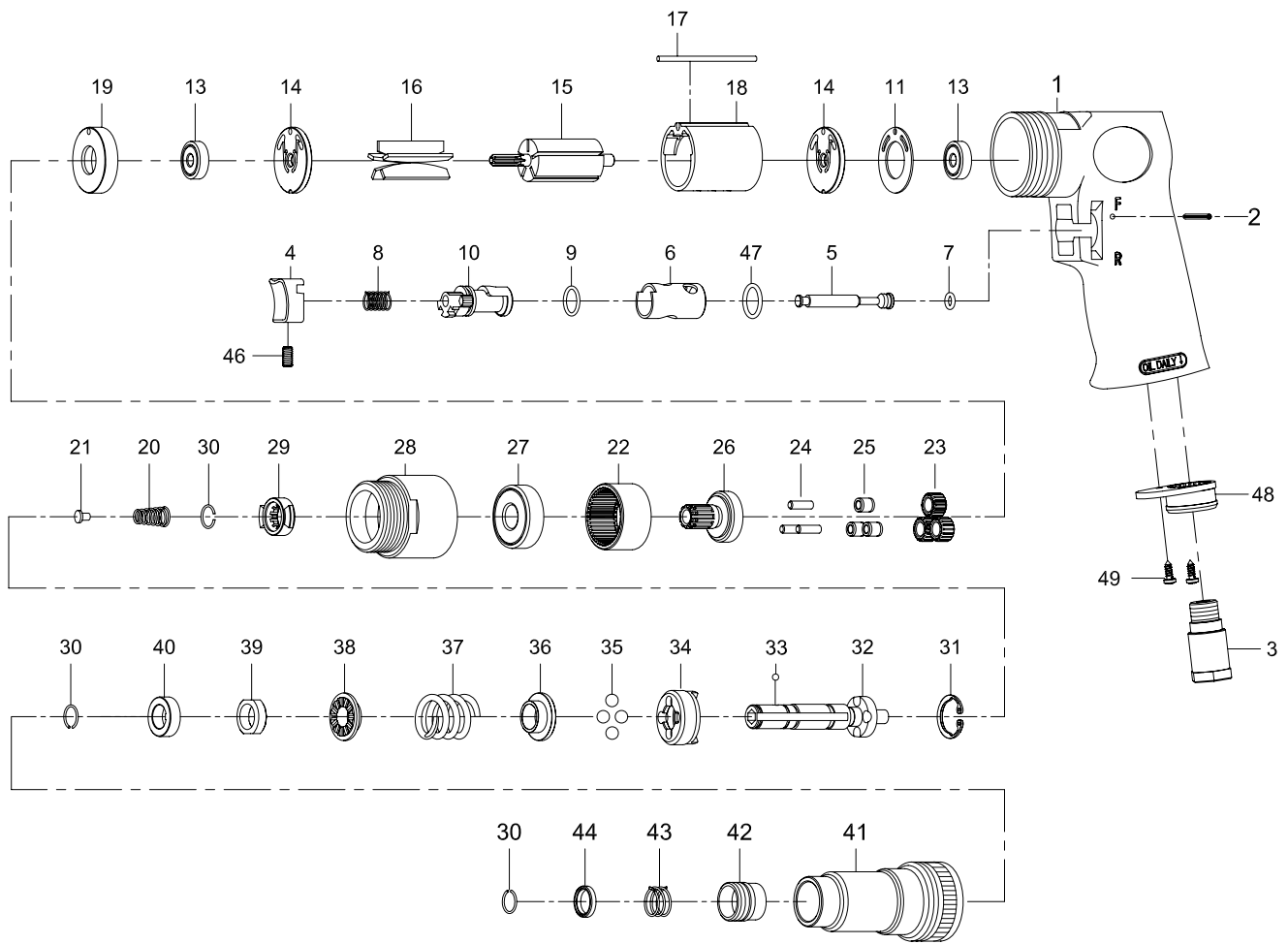


# AIR SCREWDRIVER ADJUSTABLE CLUTCH



Index No.	Parts No.	Description	Index No.	Parts No.	Description
1	80201	Motor Housing	26	80226	Work Spindle
2	80202	Spring Pin (∅2.5*24L)	27	080227	Ball Bearing (6201Z)
3	70103	Air Inlet	28	80228	Clamp Nut
4	70104	Trigger	29	80229	Drive Dog
5	80205	Valve Stem	30	80230	Retaining Ring (3)
6	80206	Reverse Bushing	31	80231	Snap Ring (RTW-21)
7	70107	O-Ring (∅4.8*∅1.9)	32	80232	Cam Spindle
8	70108	Valve Spring	33	40145	Steel Ball (1/8")
9	80209	O-Ring (∅12*∅1.6)	34	80234	Clutch
10	80210	Reverse Lever	35	80235	Steel Ball (4) (1/4")
11	80211	Motor Gasket	36	80236	Thrust Washer
13	030113	Ball Bearing (2) (626ZZ)	37	80237	Spring
14	80214	End Plate (2)	38	80238	Washer
15	80215	Rotor	39	80239	Adjust Nut
16	80216	Rotor blades (5)	40	80240	Spacer
17	80217-13	Spring Pin (∅2.5*55L)	41	80241	Clutch Housing
18	80218-22	Cylinder	42	80242	Ball Retainer
19	80219	Spacer	43	80243	Spring
20	80220	Spring	44	80244	Washer
21	80221	Spring Guide	46	70935	Set Screw (M4*8L)
22	80222	Internal Gear	47	80247	O-Ring (∅13.8*∅2)
23	80223	Planet Gear (3)	48	70110	Exhaust Diffuser
24	30124	Pin (3) (∅4*13.8L)	49	40309	Screw (2) (TS2.9)
25	80225	Bushing (3)			

802-0001

01,02,2007